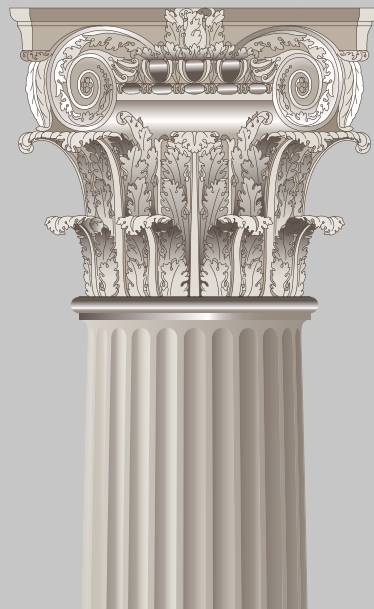




# MEDITERRANEO

thick decorative plaster based on seasoned slaked lime



# MEDITERRANEO

thick decorative plaster based on seasoned slaked lime

Mediterraneo, a word that recalls a sea and an area between Europe, Africa and Asia. The origin of some of the most ancient civilizations of the planet, where the history of mankind and the European culture find their roots. It is known for being the mother of arts and where the search for beauty began.

## RIALTO MEDITERRANEO

**rialto mediterraneo** is inspired by the Italian landscape and reproduces nature in a very authentic way.

The magnesiatic limestone, known as “Dolomite stone”, gives origin to the seasoned slaked lime, the “**grassello di calce**” with a traditional manufacturing process. After a long seasoning, the slaked lime is blended with fine **White Carrara Marble** aggregate to create a plaster. Applied with the correct technique it can reproduce in a realistic way the decorative stones of the Italian historical architectural tradition.

**rialto mediterraneo**'s formulation yields the opportunity to produce finishes that are rich in texture. It is possible to create thick artistic effects to replicate the classic decorative Italian limestones.



“Grassello di Calce”, a traditional manufacturing process

We will guide you through the Italian peninsula recreating with brushes and trowels Italian stones which are known worldwide

### Color, an inspiration from nature

**rialto** has formulated specific colors inspired by real natural stones that are typical of the Italian landscape, a perfect balance with nature.

The consistency, the patterns and colors of **rialto mediterraneo** joined with the versatility of **rialto velasil** will create a pleasant and natural sensation on your walls.



White Carrara Marble grains

## DECORATIVE SUGGESTIONS

We suggest eleven decorative solutions, that find inspiration from the classic Italian stones and we will tell you about their origins.



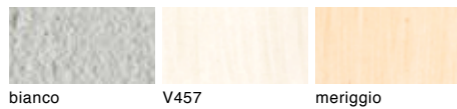
In the second part of the booklet we will show nine examples of our creations, in a combination of patterns, shades and color tones.



## ROMAN CLASSIC TRAVERTINE



Origin of the stone  
Tivoli, Province of Rome



### OUR INSPIRATION

The surface is covered with one coat of **rialto mediterraneo** color **bianco**, laid with a stainless steel trowel.

Use the linear effect plastic trowel to create the texture before mediterraneo has completely dried.  
Smoothen and compact the roughest effects with the stainless steel trowel.

Leave the product to dry for 24 hours.

Apply by brush **rialto velasil** diluted with 50% of water in two coats.

Colors: **V457, meriggio**





## ROMAN GUIDONIAN TRAVERTINE



Origin of the stone  
Guidonia, Province of Rome



### OUR INSPIRATION

The surface is covered with one coat of **rialto mediterraneo** color **bianco**, laid with a stainless steel trowel.

Use the linear effect plastic trowel to create the texture before mediterraneo has completely dried.  
Smoothen and compact the roughest effects with the stainless steel trowel.

Leave the product to dry for 24 hours.

Apply by brush **rialto velasil** diluted with 50% of water in three coats.

Colors: **gridellino**, **V316**, **turchino**





## ROYAL GUIDONIAN TRAVERTINE



### OUR INSPIRATION

The surface is covered with one coat of **rialto mediterraneo** color **bianco**, laid with a stainless steel trowel.

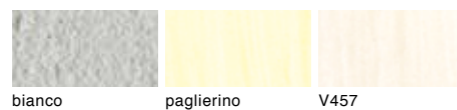
Use the linear effect plastic trowel to create the texture before mediterraneo has completely dried.

Leave the product to dry for 24 hours.

Apply by brush **rialto velasil** diluted with 50% of water in two coats.

Colors: **paglierino**, **V457**

Origin of the stone  
Guidonia, Province of Rome

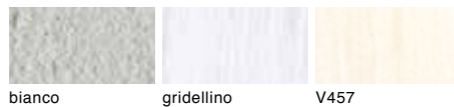




## TRANI NAVONA TRAVERTINE



Origin of the stone  
Trani, Province of Barletta-Andria-Trani



### OUR INSPIRATION

The surface is covered with one coat of **rialto mediterraneo** color **bianco**, laid with a stainless steel trowel.

Use the linear effect plastic trowel to create the texture before mediterraneo has completely dried. Smoothen and compact the roughest effects with the stainless steel trowel.

Leave the product to dry for 24 hours.

Apply by brush **rialto velasil** diluted with 50% of water in two coats.

Colors: **gridellino**, **V457**





## TRANI CLASSIC TRAVERTINE



Origin of the stone  
Trani, Province of Barletta-Andria-Trani



### OUR INSPIRATION

The surface is covered with one coat of **rialto mediterraneo** color **bianco**, laid with a stainless steel trowel.

Use the linear effect plastic trowel to create the texture before mediterraneo has completely dried.  
Smoothen and compact the roughest effects with the stainless steel trowel.

Leave the product to dry for 24 hours.

Apply by brush **rialto velasil** diluted with 50% of water in three coats.

Colors: **gridellino**, **gridellino**, **V457**





## QUARRY SPLIT FACE PINK LESSINIA STONE



### OUR INSPIRATION

The surface is covered with one coat of **rialto mediterraneo** color **bianco**, laid with a stainless steel trowel.

Use the same stainless steel trowel to create the split face effect before mediterraneo has completely dried.

Leave the product to dry for 24 hours.

Apply by brush **rialto velasil** diluted with 50% of water in two coats.

Colors: **V316, V457**

Origin of the stone  
Lessinia, Province of Verona





## QUARRY SPLIT FACE VALFONTANABUONA ARDESIA



### OUR INSPIRATION

The surface is covered with one coat of **rialto mediterraneo** color **bianco**, laid with a stainless steel trowel.

Use the rubber trowel to create the split face effect before mediterraneo has completely dried.  
Smoothen and compact the roughest effects with the stainless steel trowel.

Leave the product to dry for 24 hours.

Apply by brush **rialto velasil** diluted with 50% of water in two coats of the same color.

Colors: **V361, V361**

Origin of the stone  
Valfontanabuona, Province of Genova





## SAW CUT VALFONTANABUONA ARDESIA

---



### OUR INSPIRATION

The surface is covered with one coat of **rialto mediterraneo** color **3000**, laid with a stainless steel trowel.

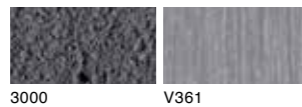
Use the rubber trowel to create the fine linear saw cut effect before mediterraneo has completely dried.  
Smoothen and compact the roughest effects with the stainless steel trowel.

Leave the product to dry for 24 hours.

Apply by brush **rialto velasil** diluted with 50% of water in one coat.

Colors: **V361**

Origin of the stone  
Valfontanabuona, Province of Genova





## LECCESE BEIGE LIMESTONE



### OUR INSPIRATION

The surface is covered with one coat of **rialto mediterraneo** color **bianco**, laid with a stainless steel trowel.

Use the linear effect plastic trowel to create the texture before mediterraneo has completely dried. Smoothen and compact the roughest effects with the stainless steel trowel.

Leave the product to dry for 24 hours.

Apply by brush **rialto velasil** diluted with 50% of water in two coats of the same color.

Colors: **V457, V457**

Origin of the stone  
Lecce





## LECCESE WHITE LIMESTONE



### OUR INSPIRATION

The surface is covered with one coat of **rialto mediterraneo** color **bianco**, laid with a stainless steel trowel.

Use the linear effect plastic trowel to create the texture before mediterraneo has completely dried. Smoothen and compact the roughest effects with the stainless steel trowel.

Leave the product to dry for 24 hours.

Apply by brush **rialto velasil** diluted with 50% of water in two coats of the same color.

Colors: **gridellino**, **gridellino**

Origin of the stone  
Lecce

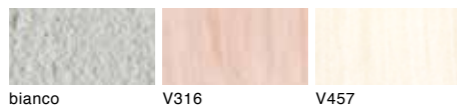




## COMISO STONE



Origin of the stone  
Comiso, Province of Ragusa



### OUR INSPIRATION

The surface is covered with one coat of **rialto mediterraneo** color **bianco**, laid with a stainless steel trowel.

Use the linear effect plastic trowel to create the texture before mediterraneo has completely dried.  
Smoothen and compact the roughest effects with the stainless steel trowel.

Leave the product to dry for 24 hours.

Apply by brush **rialto velasil** diluted with 50% of water in two coats.

Colors: **V316, V457**





## THE STONES WE ARE INSPIRED BY

### Travertine

Lapis Tiburtinus, the stone from Tivoli, this is how this stone was known during the Roman Empire and is known today as the "Travertino". It has always been chosen as the ideal stone for the decoration of villas and monuments. This material is able to transform a wall from a simple structural element to an admirable, beautiful and natural surface that can adorn the building.



Roman Classic Travertine  
Origin: Tivoli, Province of Rome



Roman Travertine  
Origin: Guidonia, Province of Rome



Royal Guidonian Travertine  
Origin: Guidonia, Province of Rome

### Trani stone

"Welcome to Trani, the city of stone.", This is the message that welcomes the visitor to this marvelous city in the region of Puglia. The Trani stone, a well-known stone even outside Italy, contains different kinds of sedimentary stones and travertine's. This stone is famous for use in monuments.



Trani Navona Travertine  
Origin: Trani, Province of Barletta-Andria-Trani



Classic Travertine  
Origin: Trani, Province of Barletta-Andria-Trani

### Lessinia stone

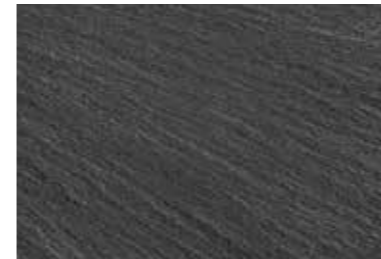
The mountainous area of Verona, the Lessinia, reaches an altitude of over 1000 meters. This is the site where this carbonate stone has been extracted since the Iron Age. It is also known as the Prun Stone and it is found in nature in various tones from white to grey. It is often used as a material for urban design and to clad significant buildings. It is also found in different shades of pale pink that can have a various amounts of patterns and veins.



Quarry split face Pink Lessinia stone  
Origin: Lessinia, Province of Verona

### Ardesia slate stone

A sedimentary rock from the region of Liguria with antique origins. Austere in its glossy and matte shades of dark grey, it was traditionally used in black and white patterns combined with the Carrara Marble. Its texture, when cut or extracted from the quarry, matches perfectly with other construction elements, such as wood, steel, marbles and glass. **Rialto mediterraneo** readily assumes the looh and feel of this noble and elegant stone when laid on the wall.



Quarry split face Ardesia  
Origin: Valfontanabuona, Province of Genova



Saw cut Valfontanabuona Ardesia  
Origin: Valfontanabuona, Province of Genova

### Leccese stone

A kind of homogenous limestone which is perfect for different uses, just like **rialto mediterraneo**. In the area of Salento this rock is commonly found in a range of various colors. These tones are given by different content of quartz, oxides and clay.



Leccese Beige Limestone  
Origin: Lecce



Leccese White Limestone  
Origin: Lecce

### Comiso stone

From the heart of the Isle of Sicily, this sedimentary calcareous stone is characterized by an elegant beauty. This stone is colored by warm and soft tones and sometimes reveals the presence of quartz in it. In this same geographical area, you can find the presence of compact and fine limestone's with a solid structure.



Comiso stone  
Origin: Comiso, Province of Ragusa



# OUR CREATIONS

Thanks to **rialto mediterraneo's** structure and workability, it is possible to create modern and highly creative effects. This catalogue offers some suggestions of effects that are limited only by the creativity of the applicator. We suggest some finishes which are obtained with different combinations of colors and techniques.





## CARTAGENA EFFECT

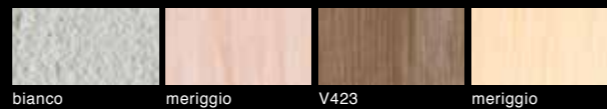
The surface is covered with one coat of rialto mediterraneo color bianco, laid with a stainless steel trowel.

Use the linear effect plastic trowel to create the texture before mediterraneo has completely dried. Smoothen and compact the roughest effects with the stainless steel trowel.

Leave the product to dry for 24 hours.

Apply by brush rialto velasil diluted with 50% of water in three coats.

Colors: **meriggio**, **V423**, **meriggio**





## MAIORCA EFFECT

The surface is covered with one coat of **rialto mediterraneo** color **bianco**, laid with a stainless steel trowel.

Use the linear effect plastic trowel to create the texture before mediterraneo has completely dried. Smoothen and compact the roughest effects with the stainless steel trowel.

Leave the product to dry for 24 hours.

Apply by brush **rialto velasil** diluted with 50% of water in three coats.

Colors: **turchino**, **primavera**, **paglierino**





## THARROS EFFECT

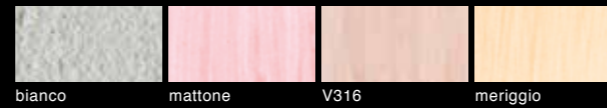
The surface is covered with one coat of **rialto mediterraneo** color **bianco**, laid with a stainless steel trowel.

Use the linear effect plastic trowel to create the texture before mediterraneo has completely dried.  
Smoothen and compact the roughest effects with the stainless steel trowel.

Leave the product to dry for 24 hours.

Apply by brush **rialto velasil** diluted with 50% of water in three coats.

Colors: **mattone**, **V316**, **meriggio**





## GERBA EFFECT

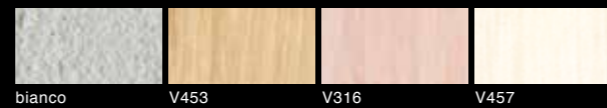
The surface is covered with one coat of **rialto mediterraneo** color **bianco**, laid with a stainless steel trowel.

Use the rubber trowel to create the fine linear effects before mediterraneo has completely dried.  
Smoothen and compact the roughest effects with the stainless steel trowel.

Leave the product to dry for 24 hours.

Apply by brush **rialto velasil** diluted with 50% of water in three coats.

Colors: **V453**, **V316**, **V457**





## MALAGA EFFECT

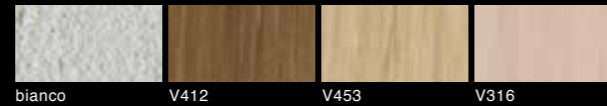
The surface is covered with one coat of **rialto mediterraneo** color **bianco**, laid with a stainless steel trowel.

Use the scratching float to create the texture before mediterraneo has completely dried.  
Smoothen and compact the roughest effects with the stainless steel trowel.

Leave the product to dry for 24 hours.

Apply by brush **rialto velasil** diluted with 50% of water in three coats.

Colors: **V412, V453, V316**





## ITACA EFFECT

The surface is covered with one coat of **rialto mediterraneo** color **bianco**, laid with a stainless steel trowel.

Use the plastic roller bamboo effect to create the texture before mediterraneo has completely dried. Smoothen and compact the roughest effects with the stainless steel trowel.

Leave the product to dry for 24 hours.

Apply by brush **rialto velasil** diluted with 50% of water in three coats.

Colors: **V361**, **gridellino**, **V457**





## DELFI EFFECT

---

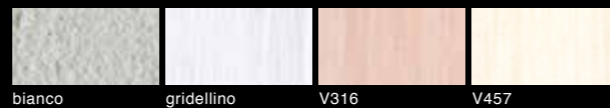
The surface is covered with one coat of **rialto mediterraneo** color **bianco**, laid with a stainless steel trowel.

Use the plastic roller bamboo effect to create the texture before mediterraneo has completely dried.  
Smoothen and compact the roughest effects with the stainless steel trowel.

Leave the product to dry for 24 hours.

Apply by brush **rialto velasil** diluted with 50% of water in three coats.

Colors: **gridellino**, **V316**, **V457**





## SPARTA EFFECT

The surface is covered with one coat of **rialto mediterraneo** color **bianco**, laid with a stainless steel trowel.

Use the rubber roller to create the texture before mediterraneo has completely dried. Smoothen and compact the roughest effects with the stainless steel trowel.

Leave the product to dry for 24 hours.

Apply by brush **rialto velasil** diluted with 50% of water in three coats.

Colors: **mattone**, **V316**, **meriggio**





## EFESO EFFECT

The surface is covered with one coat of **rialto mediterraneo** color **bianco**, laid with a stainless steel trowel.

Use the scratching float to create the texture before mediterraneo has completely dried.  
Smoothen and compact the roughest effects with the stainless steel trowel.

Leave the product to dry for 24 hours.

Apply by brush **rialto velasil** diluted with 50% of water in three coats.

Colors: **V316**, a generous coat of **mattone**, **V361**

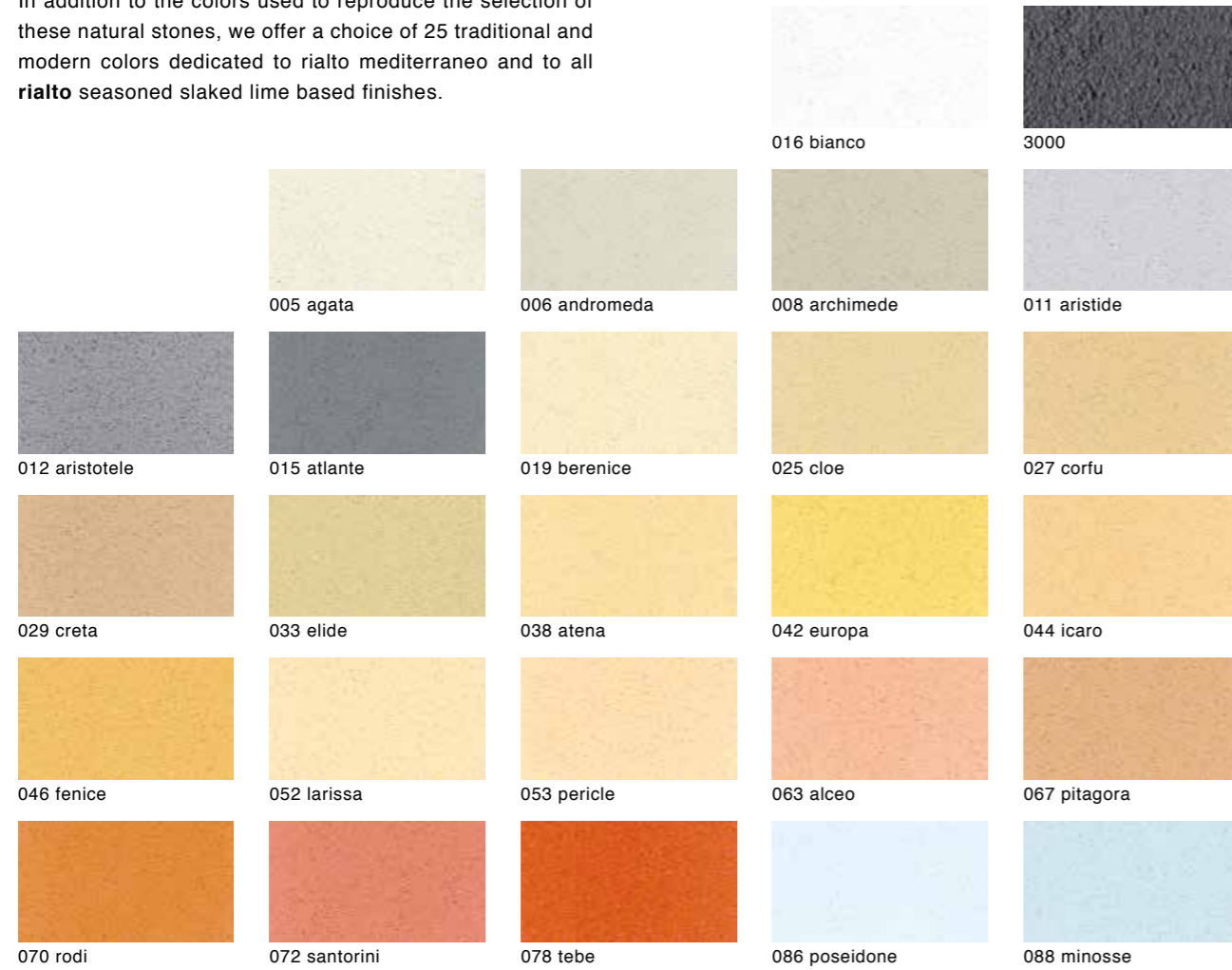




# THE COLOUR RANGE

## MEDITERRANEO

In addition to the colors used to reproduce the selection of these natural stones, we offer a choice of 25 traditional and modern colors dedicated to rialto mediterraneo and to all **rialto** seasoned slaked lime based finishes.



## VELASIL

The deepness of the color, the shades and tone variations, are emphasized by the use of colored **rialto velasil**.

The tones used for these reproductions are from the standard color range.





## APPLICATION GUIDE

texture type	rialto mediterraneo coat			rialto velasil		
	color	applied with	worked with	1° color	2° color	3° color
				applied by brush		
<b>Roman Classic Tivoli Travertine</b>	bianco	Stainless steel trowel	Linear effect plastic trowel	<b>V457</b>	<b>meriggio</b>	
<b>Roman Guidonian Travertine</b>	bianco	Stainless steel trowel	Linear effect plastic trowel	<b>gridellino</b>	<b>V316</b>	<b>turchino</b>
<b>Royal Guidonian Travertine</b>	bianco	Stainless steel trowel	Stainless steel trowel	<b>paglierino</b>	<b>V457</b>	
<b>Trani Navona Travertine</b>	bianco	Stainless steel trowel	Linear effect plastic trowel	<b>gridellino</b>	<b>V457</b>	
<b>Trani Classic Travertine</b>	bianco	Stainless steel trowel	Linear effect plastic trowel	<b>gridellino</b>	<b>gridellino</b>	<b>V457</b>
<b>Quarry split face Pink Lessinia Stone</b>	bianco	Stainless steel trowel	Stainless steel trowel	<b>V316</b>	<b>V457</b>	
<b>Quarry split face Valfontanabuona Ardesia</b>	bianco	Stainless steel trowel	Linear effect rubber trowel	<b>V361</b>	<b>V361</b>	
<b>Saw Cut Valfontanabuona Ardesia</b>	3000	Stainless steel trowel	Linear effect rubber trowel	<b>V361</b>		
<b>Beige Lecce Limestone</b>	bianco	Stainless steel trowel	Linear effect plastic trowel	<b>V457</b>	<b>V457</b>	
<b>White Lecce Limestone</b>	bianco	Stainless steel trowel	Linear effect plastic trowel	<b>gridellino</b>	<b>gridellino</b>	
<b>Comiso Stone</b>	bianco	Stainless steel trowel	Linear effect plastic trowel	<b>V316</b>	<b>V457</b>	
<b>Cartagena</b>	bianco	Stainless steel trowel	Linear effect plastic trowel	<b>meriggio</b>	<b>V423</b>	<b>meriggio</b>
<b>Maiorca</b>	bianco	Stainless steel trowel	Linear effect plastic trowel	<b>turchino</b>	<b>primavera</b>	<b>paglierino</b>
<b>Tharros</b>	bianco	Stainless steel trowel	Linear effect plastic trowel	<b>mattoni</b>	<b>V316</b>	<b>meriggio</b>
<b>Gerba</b>	bianco	Stainless steel trowel	Linear effect rubber trowel	<b>V453</b>	<b>V316</b>	<b>V457</b>
<b>Malaga</b>	bianco	Stainless steel trowel	Scratching float	<b>V412</b>	<b>V453</b>	<b>V316</b>
<b>Itaca</b>	bianco	Stainless steel trowel	Plastic roller bamboo effect	<b>V361</b>	<b>gridellino</b>	<b>V457</b>
<b>Delfi</b>	bianco	Stainless steel trowel	Plastic roller bamboo effect	<b>gridellino</b>	<b>V316</b>	<b>V457</b>
<b>Sparta</b>	bianco	Stainless steel trowel	Rubber roller	<b>mattoni</b>	<b>V316</b>	<b>meriggio</b>
<b>Efeso</b>	bianco	Stainless steel trowel	Scratching float	<b>V316</b>	<b>mattoni</b>	<b>V361</b>

### Tools:



Stainless steel trowel



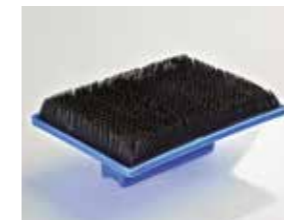
Linear effect Plastic trowel



Brush



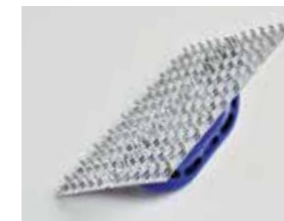
Plastic roller bamboo effect



Linear effect rubber trowel



Linear effect rubber roller



Scratching float

### Covering Capacity

→ **rialto mediterraneo**: 2 kg/sqm

→ **rialto velasil**: 15 sqm/l

These values represent an average and may vary according to the desired effect and nature of the substrate

**rialto mediterraneo** is a thick decorative plaster that gives the opportunity to replicate with success the color and structure of various stones used in interior design and architecture.

Its outdoor use is recommended for applications on vertical walls that are protected from direct rain.

### Customer assistance and training courses

**rialto** offers customer assistance and technical consultancy to support the correct use of seasoned slaked lime finishes with specific training courses dedicated to contractors.

This training program has the goal of sharing knowledge and revitalizing the interest in this Italian tradition.

Note: the decorative solutions illustrated in this catalogue are to be considered a reference guide to inspire new decorative effects. The final effect of the product on the wall is decided by the personal style and interpretation of the installer. The versatile nature of the product makes every single project customisable and unique.

Care has been taken to ensure that the colors in this catalogue represent the true color of the product. However, this printed catalogue only approximates the color of real finishes. Printed colors may change over time due to exposure of light, paper aging, pigment fading and handling.

Total or partial reproduction of the content of this catalogue without written authorisation from rialto is prohibited.









**rialto**  
via caduti sul lavoro, 7 - z.i. noghere  
34015 muggia - trieste - italy  
tel. +39 040 9897300  
rialto@rialto-colors.com - www.rialto-colors.com  
rialto is a brand of:  
COVEMA Vernici S.p.A.