

rialto epoca spatolato



Seasoned slaked lime based finishing stucco for interiors and exteriors

rialto epoca spatolato has a glossy spatula effect. It is made up of seasoned slaked lime, natural earths and inorganic oxides, selected white Carrara marbles and mineral additives.

PROPERTIES

rialto epoca spatolato is marked by and stands out for the following characteristics:

- it allows surfaces to breath:
430 g/m² in 24 hours, Class V1 (UNI EN ISO 7783-2), Sd=0.05 m
- it adheres perfectly to backing (32 kgf/cm²)
- it withstands alkali corrosion
- it is not prone to shrinkage if thin layers of product are applied
- it is non- flammable
- it does not flake or peel
- it prevents from mould and algae attacks thanks to the natural biocide properties of the lime
- it is ready to use
- it is abrasion resistant; > 12.000 Gardner cycles
- specific gravity: 1.60 ± 0.05 kg/l
- pH: 13.5 ± 0.5
- viscosity: non-Newtonian product; average value >40,000± 2.000 mPas
- dry residue: 66 ± 1% by weight

PURPOSES

rialto epoca spatolato is ideal for use on exterior masonry surfaces to which a decorative, "old" effect is given, as required by the Supervisory Boards for Cultural and Environmental Heritage.

rialto epoca spatolato is widely used especially in carrying out conservation work on buildings located in areas of historical interest.

Provided that surfaces are sound and clean, **rialto epoca spatolato** is suitable for the following applications:

- fine plasters
- dehumidifying plasters
- restoration plasters
- surfaces smoothed down with **rialto wallcem**
- surfaces treated with adhesion promoter **rialto fondo di aderenza**
- lime based fine decorative plaster **rialto antiqua 1**

WORKING INSTRUCTIONS

Prepare scaffolding so as to allow continuous application until architectural impediments are encountered (stringcourses, corners, joints, etc.)

- on old exterior plaster or surfaces where paint is peeling and new plaster where cracks have appeared or to which filler has been applied, remove loose or dusty material, wet surface and then apply **rialto wallcem**. Allow at least 24 hours for surface to dry before applying **rialto epoca spatolato**, allow 24 hours before applying next coat
- if the surface is sound and smooth but not compatible with application of lime based coating, (bad adhesion), for example acrylic paints and coatings, apply one or two coats of adhesion promoter **rialto fondo di aderenza** and let it dry for at least 48 hours
- on exterior walls or for protection against salt efflorescence apply a generous coat of **rialto isocal** to dry surface and leave for at least 48 hours before applying **rialto epoca spatolato**
- if the surface is dusty or too absorbent, apply a priming coat of anti - efflorescence **rialto dursil** and leave for at least 48 hours before apply **rialto epoca spatolato**
- on smooth interiors lime plaster apply **rialto epoca spatolato** directly; if the surface is dusty or too absorbent, apply a coat of **rialto primer** diluted with 8 parts of water before applying **rialto epoca spatolato**, in order to reduce absorption
- on painted interior surfaces in good conditions, apply a coat of **rialto eco fondo** to promote a good adhesion of **rialto epoca spatolato**,
- do not apply at air surface temperature below 8 °C (46 °F) or exceeding 35 °C (95 °F) and relative humidity of the air >75%.
- protect the newly applied coat from heavy rain for about 48 hours
- on exterior surfaces are suggested white or pastel colors only
- store the product at a temperature of above 5 °C (41 °F) and not exceeding 30 °C (86 °F)
- dispose of product with care
- dispose of waste through authorized waste disposal services

COVERING CAPACITY

When the product is applied with a stainless steel trowel, the average covering capacity is 0.8/1.2 kg/m² (4-6 sq. ft./lb.) for three coats.

PACKAGING

rialto epoca spatolato is available in 10 kg containers.

COLOR RANGE

rialto epoca spatolato is available in a wide range of colors. See relevant color chart and/or fan deck. Shades not included in the color range are also available at extra cost depending on the shade. A sample of the color must be provided.

Minimum quantity: 80 kg.

rialto epoca spatolato bianco (white) can be tinted with **rialto inorganic tinting pastes** with a max suggested quantity of 3% by weight. Since this is a mineral product, the color may be different from the sample color due to different production batches, different absorption rate of substrates or weather conditions during which the product is applied. For this reason, it is advisable to work using the same production batch

REFERENCES

For further information regarding the product mentioned in the text, see the following technical sheets:

rialto durasil

rialto eco fondo

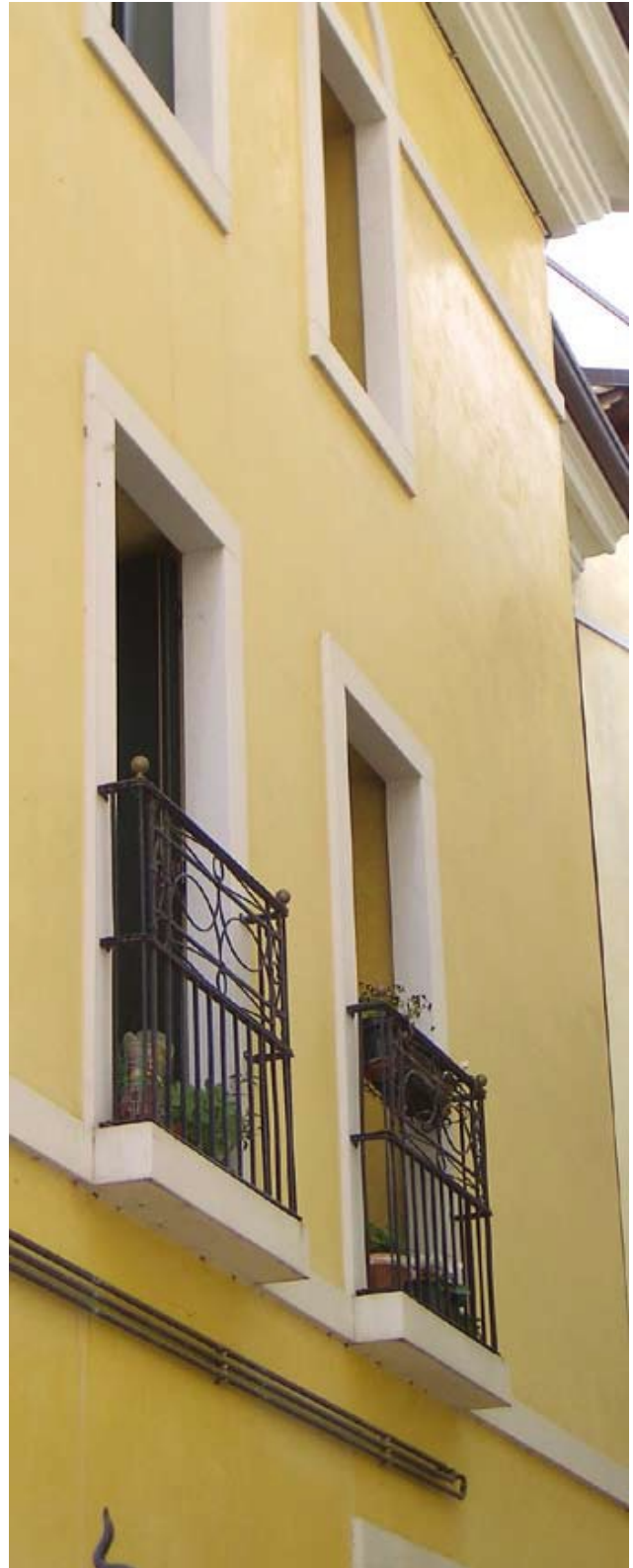
rialto fondo di aderenza

rialto isocal

rialto primer

rialto wallcem bianco

rialto lime based finishes catalogue



For further help or information regarding the products in the **rialto** range, contact your local dealer.

Every care has been taken to ensure that the information provided in this technical data sheet is accurate. **rialto** is unable to guarantee results, as it has no control over the conditions under which the products are applied.

rialto
via caduti sul lavoro 7, Z.I. noghere 34015 muggia, trieste, italia
tel. +39 040 9897300
rialto@rialto-colors.com www.rialto-colors.com

rialto is a brand of: COVEMA Vernici S.p.A.
strada della barra 5, 10040 druento, torino, italia
www.covemavernici.com