

# metallo continuo



**ERRELAB**  
crea in resina





*Metallo Continuo broadens the horizons in resin floors and walls. The latest design trends borrow from nature itself. Vibrant colours, luxurious textures and enduring beauty.*

*Artisanal skill and craftsmanship combined with the smooth and textured finishes of Metallo Continuo satisfies the requirements of the contemporary design trends.*





## lamina 2D

*Brightness*  
Metal foil in resin to highlight  
the uniform smooth metal  
effect that enhances the light  
reflections on textural  
surfaces.



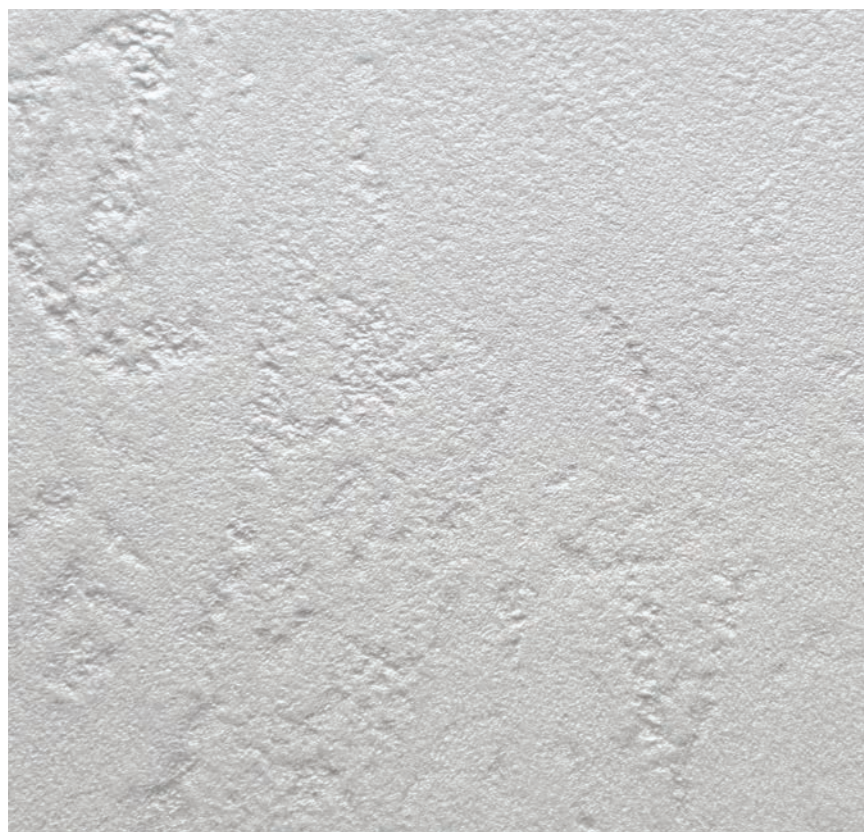
## metallo 2D

*Spatiality*  
Smooth Metallic Resin to  
highlight contemporary  
surfaces looking for light,  
style, and space.



## lamina 3D

*Solidity*  
Metal foil in resin to highlight  
a uniform smooth metal and  
textural effect which gives  
strength and stability to  
surfaces.



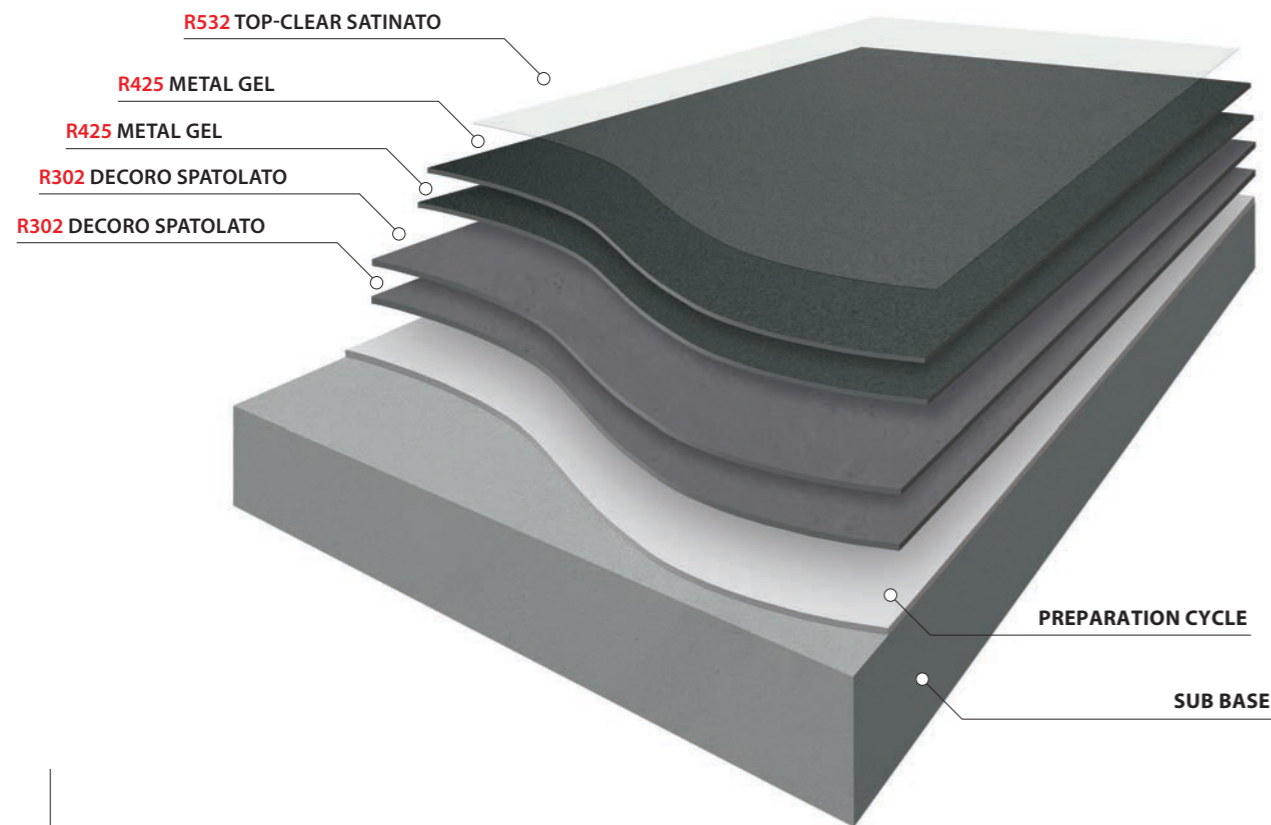
## metallo 3D

*Deepness*  
Textural Metallic Resin to  
highlight solid and sinuous  
surfaces in search of  
contemporary sensations.





# LAMINA CONTINUA - L2D



APPLICATION CYCLE  
DECORATIVE EFFECT ONLY

## 1<sup>st</sup> DAY R302 DECORO SPATOLATO ( \* )

### 1<sup>st</sup> PHASE

#### APPLICATION OF DECORATIVE LAYER

Low-thickness smooth-coat application of a first layer of coloured decorative mortar in the reference colour (\* see L2D table on page 8). Always keep the trowel blade clean during application.



**BICOMPONENTE (A+B)**  
**Dilution - floor:** 5% Water  
**Dilution - wall:** Up to 1% Addensante  
**Tool:** American steel trowel  
**Pot-life at 25°C:** 40 minutes  
**Overcoatable at 25°C:** 18 hours  
**Consumption:** 0,50 kg/m<sup>2</sup>

## 2<sup>nd</sup> DAY R302 DECORO SPATOLATO ( \* )

### 2<sup>nd</sup> PHASE

#### APPLICATION OF DECORATIVE COAT

Low-thickness smooth-coat application of a second layer of coloured decorative mortar in the reference colour (\* See L2D table on page 8). Always keep the trowel blade clean during application.



18 h

**BICOMPONENTE (A+B)**  
**Dilution - floor:** 5% Water  
**Dilution - wall:** Up to 1% Addensante  
**Tool:** American steel trowel  
**Pot-life at 25°C:** 40 minutes  
**Overcoatable at 25°C:** 18 hours  
**Consumption:** 0,50 kg/m<sup>2</sup>

## 3<sup>rd</sup> DAY R425 METAL GEL ( \* )

### 3<sup>rd</sup> PHASE

#### APPLICATION OF COLORED FINISH WITH SEMI-COVERING OR VEILING EFFECT

Smooth application of a coloured finish in the reference colour (\* see L2D table on page 8) for the creation of a covering background. Spread quickly with a trowel, adding an adequate amount to the surface, always maintain a wet edge until completely and evenly covered.



4-6 h

**MONOCOMPONENTE (Mono)**  
**Dilution:** Ready to use  
**Tool:** Transparent plastic trowel  
**Pot-life at 25°C:** Non applicable  
**Overcoatable at 25°C:** 4-6 hours  
**Consumption:** 0,10 kg/m<sup>2</sup>

## R425 METAL GEL ( \* )

### 4<sup>th</sup> PHASE

#### APPLICATION OF COLORED FINISH WITH SEMI-COVERING OR VEILING EFFECT

Smooth application of coloured finish in the reference colour (\* see L2D table on page 8) for the creation of the final effect. Spread quickly with a trowel, adding an adequate amount to the surface, always maintain a wet edge until completely and evenly covered.



4-6 h

**MONOCOMPONENTE (Mono)**  
**Dilution:** Ready to use  
**Tool:** Transparent plastic trowel  
**Pot-life at 25°C:** Non applicabile  
**Overcoatable at 25°C:** 4-6 hours  
**Consumption:** 0,10 kg/m<sup>2</sup>

## 4<sup>th</sup> DAY R532 TOP-CLEAR SATINATO

### 5<sup>th</sup> PHASE

#### APPLICATION OF TRANSPARENT PROTECTIVE FINISH

Roller application of one or two coats of water-based polyurethane transparent top coat in the satin version.



24 h

**BICOMPONENTE (A+B)**  
**Dilution:** 10% Water  
**Tool:** Microfiber Roller (10mm)  
**Pot-life at 25°C:** 90 minutes  
**Walkability at 25°C:** 24 hours  
**Consumption:** 0,10 kg/m<sup>2</sup>

## LAMINA CONTINUA - L2D

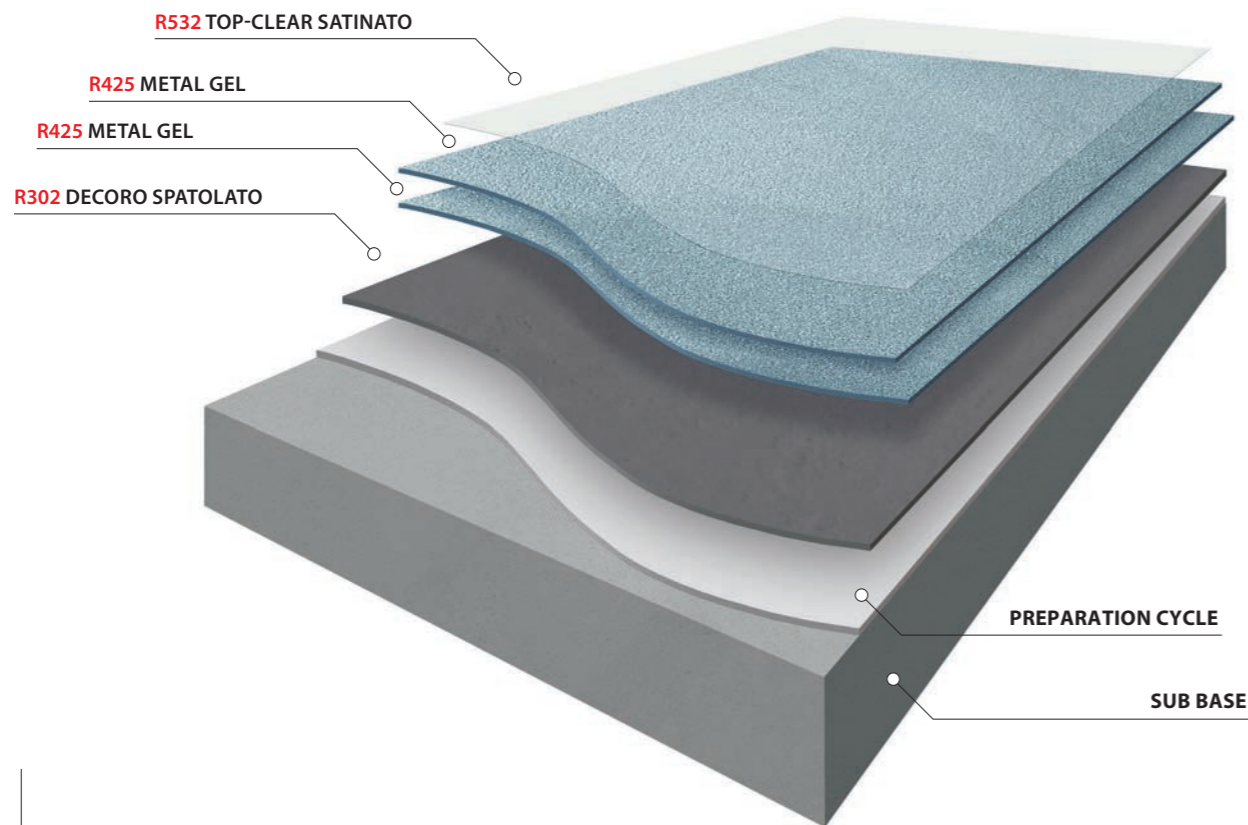
The Lamina Continua L2D excels in “smooth” applications, offering sleek surfaces that embody the elegance of minimalism. Hardness and resistance combine with a 2D design, perfect for those seeking a sober yet sophisticated visual effect. Our collection stands out for its high-quality metals, which, through a carefully selected color palette and delicate nuances, meet contemporary trends, ensuring a long-lasting product with strong appeal in both the Italian and international markets.



LAMINA CONTINUA 2D	Cycle Days	Floor & Wall	R302 DECORO SPATOLATO				R425 METAL GEL			Finishing Coat
			Base Product Colour (*)	Coats & Consumption	Application	Sand	Coats & Consumption	Colour	Tool	
<b>IRON</b>	4	✓	(R302) DECORO SPATOLATO <b>ARDESIA</b>	1 <sup>st</sup> coat 0,50 kg/m <sup>2</sup> 2 <sup>nd</sup> coat 0,50 kg/m <sup>2</sup>	Smooth application in 2 coats	from 80 to 120 grit	1 <sup>st</sup> coat 0,10 kg/m <sup>2</sup> 2 <sup>nd</sup> coat 0,10 kg/m <sup>2</sup>	MG.05.00 MG.05.00	American Plastic Trowel	(R532) TOP-CLEAR SATINATO
<b>INOX</b>	4	✓	(R302) DECORO SPATOLATO <b>GRIGIO FREDDO</b>	1 <sup>st</sup> coat 0,50 kg/m <sup>2</sup> 2 <sup>nd</sup> coat 0,50 kg/m <sup>2</sup>	Smooth application in 2 coats	from 80 to 120 grit	1 <sup>st</sup> coat 0,10 kg/m <sup>2</sup> 2 <sup>nd</sup> coat 0,10 kg/m <sup>2</sup>	MG.10.03 MG.10.03	American Plastic Trowel	(R532) TOP-CLEAR SATINATO
<b>LIGHT GOLD</b>	4	✓	(R302) DECORO SPATOLATO <b>BRONZO</b>	1 <sup>st</sup> coat 0,50 kg/m <sup>2</sup> 2 <sup>nd</sup> coat 0,50 kg/m <sup>2</sup>	Smooth application in 2 coats	from 80 to 120 grit	1 <sup>st</sup> coat 0,10 kg/m <sup>2</sup> 2 <sup>nd</sup> coat 0,10 kg/m <sup>2</sup>	MG.10.05 MG.10.05	American Plastic Trowel	(R532) TOP-CLEAR SATINATO
<b>MERCURY</b>	4	✓	(R302) DECORO SPATOLATO <b>GRIGIO FREDDO</b>	1 <sup>st</sup> coat 0,50 kg/m <sup>2</sup> 2 <sup>nd</sup> coat 0,50 kg/m <sup>2</sup>	Smooth application in 2 coats	from 80 to 120 grit	1 <sup>st</sup> coat 0,10 kg/m <sup>2</sup> 2 <sup>nd</sup> coat 0,10 kg/m <sup>2</sup>	MG.10.01 MG.10.01	American Plastic Trowel	(R532) TOP-CLEAR SATINATO
<b>BRONZE</b>	4	✓	(R302) DECORO SPATOLATO <b>BRONZO</b>	1 <sup>st</sup> coat 0,50 kg/m <sup>2</sup> 2 <sup>nd</sup> coat 0,50 kg/m <sup>2</sup>	Smooth application in 2 coats	from 80 to 120 grit	1 <sup>st</sup> coat 0,10 kg/m <sup>2</sup> 2 <sup>nd</sup> coat 0,10 kg/m <sup>2</sup>	MG.06.00 MG.06.00	American Plastic Trowel	(R532) TOP-CLEAR SATINATO
<b>PALE GOLD</b>	4	✓	(R302) DECORO SPATOLATO <b>GRIGIO CALDO</b>	1 <sup>st</sup> coat 0,50 kg/m <sup>2</sup> 2 <sup>nd</sup> coat 0,50 kg/m <sup>2</sup>	Smooth application in 2 coats	from 80 to 120 grit	1 <sup>st</sup> coat 0,10 kg/m <sup>2</sup> 2 <sup>nd</sup> coat 0,10 kg/m <sup>2</sup>	MG.10.06 MG.10.06	American Plastic Trowel	(R532) TOP-CLEAR SATINATO



# LAMINA CONTINUA - L3D



APPLICATION CYCLE  
DECORATIVE EFFECT ONLY

## 1<sup>st</sup> DAY R302 DECORO SPATOLATO ( \* )

### 1<sup>st</sup> PHASE

#### APPLICATION OF DECORATIVE LAYER

A single coat application of product colored in the reference shade (\* see table L3D on page 12). without scraping the base layer. Then it is necessary to "pat" the surface of the area just worked with the trowel plate, avoiding tilting the blade, randomly and without a particular design. Create obvious irregularities and ripples that will be immediately smoothed by lightly stroking the trowel across the surface.



**BICOMPONENTE (A+B)**  
**Dilution - floor:** Ready to use  
**Dilution - wall:** Up to 1% addensante  
**Tool:** American steel trowel  
**Pot-life a 25°C:** 40 minutes  
**Overcoatable at 25°C:** 18 hours  
**Consumption:** 0,80 Kg/m<sup>2</sup>

18 h

## 2<sup>nd</sup> DAY R425 METAL GEL ( \* )

### 2<sup>nd</sup> PHASE

#### APPLICATION OF COLORED FINISH WITH SEMI-COVERING OR VEILING EFFECT

Smooth application of coloured finish in the reference colour(\* see L3D table on page 12) for the creation of a covering background. Spread quickly with a trowel, adding an adequate amount to the surface, always maintain a wet edge until completely and evenly covered.



**MONOCOMPONENTE (Mono)**  
**Dilution:** Ready to use  
**Tool:** Transparent plastic trowel  
**Pot-life at 25°C:** Non applicable  
**Overcoating at 25°C:** 4-6 hours  
**Consumption:** 0,15 Kg/m<sup>2</sup>

4-6 h

## R425 METAL GEL ( \* )

### 3<sup>rd</sup> PHASE

#### APPLICATION OF COLORED FINISH WITH SEMI-COVERING OR VEILING EFFECT

Application of finishing coat colored in the reference colour (\* see L3D table on page 12) for the creation of the final effect. Spread quickly with a trowel, adding an adequate amount to the surface, always maintain a wet edge until completely and evenly covered.



**MONOCOMPONENTE (Mono)**  
**Dilution:** Ready to use  
**Tool:** Transparent plastic trowel  
**Pot-life at 25°C:** Non applicable  
**Overcoating at 25°C:** 4-6 hours  
**Consumption:** 0,10 Kg/m<sup>2</sup>

4-6 h

## 3<sup>rd</sup> DAY R532 TOP-CLEAR SATINATO

### 4<sup>th</sup> PHASE

#### APPLICATION OF TRANSPARENT PROTECTIVE FINISH

Roller application of one or two coats of water-based polyurethane transparent finish in the satin version.



**BICOMPONENTE (A+B)**  
**Dilution:** 10% water  
**Tool:** Microfibre roller (10mm)  
**Pot-life at 25°C:** 90 minutes  
**Walkability at 25°C:** 24 hours  
**Consumption:** 0,10 Kg/m<sup>2</sup>

24 h

## LAMINA CONTINUA - L3D

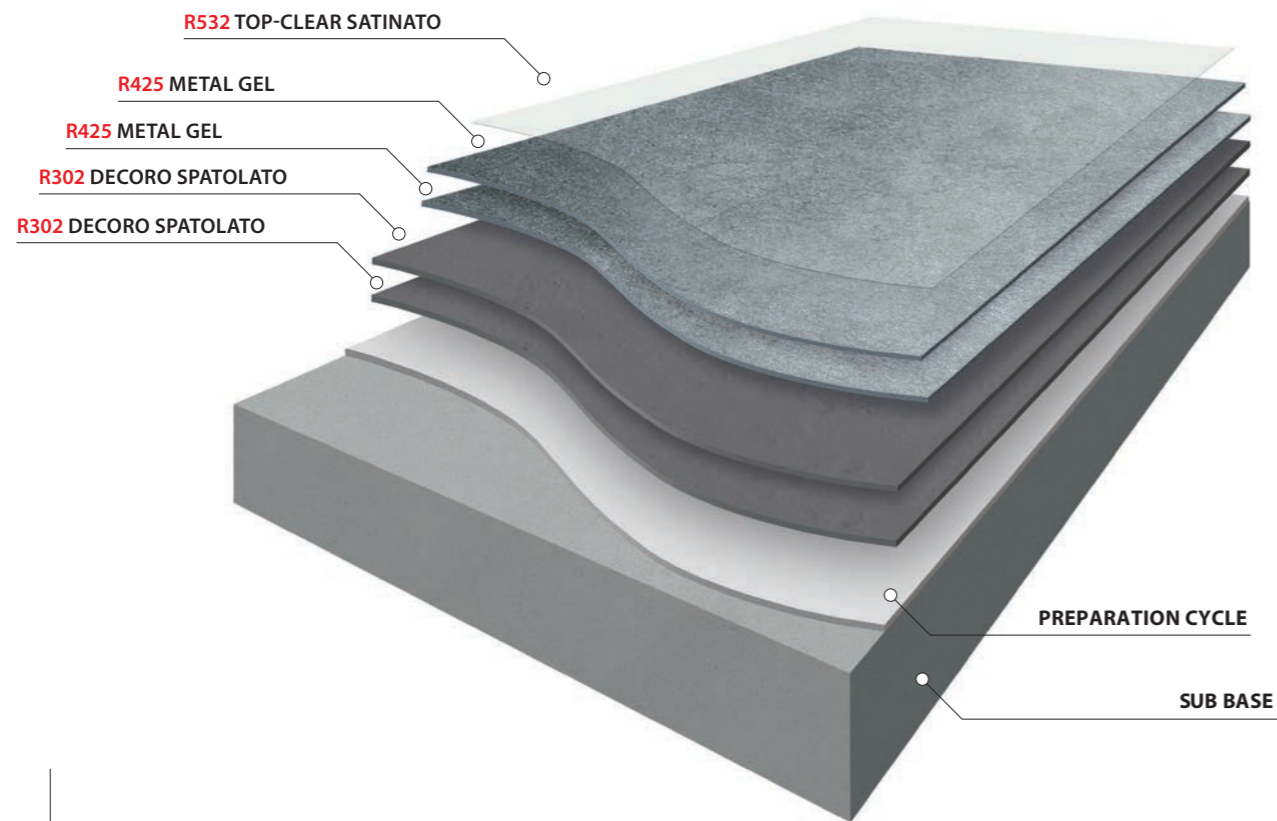
Lamina Continua L3D is distinguished by its three-dimensional aspect, offering aesthetic solutions with greater depth and material texture. This evolution from the previous "Pietra Continua" collection incorporates new technologies to enhance 3D effects, combining resistance and innovative appearance. Perfect for creating unique environments, our L3D range introduces a variety of material finishes that capture light, bringing dynamic and visually stimulating spaces to life.



LAMINA CONTINUA 3D	Cycle Days	Floor & Wall	R302 DECORO SPATOLATO				R425 METAL GEL			Finishing Coat
			Base Product Colour (*)	Coats & Consumption	Application	Sand	Coats & Consumption	Colour	Tool	
<b>PLATINUM</b>	3	✓	(R302) DECORO SPATOLATO <b>GRIGIO FREDDO</b>	<b>Single Coat</b> 0,80 kg/m <sup>2</sup>	Spread application. Beat and then stroke, smoothing in a casual and light way	80 grit	<b>1st coat</b> 0,15 kg/m <sup>2</sup> <b>2nd coat</b> 0,10 kg/m <sup>2</sup>	MG.04.00 MG.04.00	American Plastic Trowel	(R532) TOP-CLEAR SATINATO
<b>RED COPPER</b>	3	✓	(R302) DECORO SPATOLATO <b>BRONZO</b>	<b>Single Coat</b> 0,80 kg/m <sup>2</sup>	Spread application. Beat and then stroke, smoothing in a casual and light way	80 grit	<b>1st coat</b> 0,15 kg/m <sup>2</sup> <b>2nd coat</b> 0,10 kg/m <sup>2</sup>	MG.03.00 MG.03.00	American Plastic Trowel	(R532) TOP-CLEAR SATINATO
<b>COPPER</b>	3	✓	(R302) DECORO SPATOLATO <b>BRONZO</b>	<b>Single Coat</b> 0,80 kg/m <sup>2</sup>	Spread application. Beat and then stroke, smoothing in a casual and light way	80 grit	<b>1st coat</b> 0,15 kg/m <sup>2</sup> <b>2nd coat</b> 0,10 kg/m <sup>2</sup>	MG.10.04 MG.10.04	American Plastic Trowel	(R532) TOP-CLEAR SATINATO
<b>PINK GOLD</b>	3	✓	(R302) DECORO SPATOLATO <b>GRIGIO CALDO</b>	<b>Single Coat</b> 0,80 kg/m <sup>2</sup>	Spread application. Beat and then stroke, smoothing in a casual and light way	80 grit	<b>1st coat</b> 0,15 kg/m <sup>2</sup> <b>2nd coat</b> 0,10 kg/m <sup>2</sup>	MG.04.01 MG.04.01	American Plastic Trowel	(R532) TOP-CLEAR SATINATO
<b>OXID COPPER</b>	3	✓	(R302) DECORO SPATOLATO <b>VERDE RAME</b>	<b>Single Coat</b> 0,80 kg/m <sup>2</sup>	Spread application. Beat and then stroke, smoothing in a casual and light way	80 grit	<b>1st coat</b> 0,15 kg/m <sup>2</sup> <b>2nd coat</b> 0,10 kg/m <sup>2</sup>	MG.07.01 MG.07.01	American Plastic Trowel	(R532) TOP-CLEAR SATINATO
<b>TITANIUM</b>	3	✓	(R302) DECORO SPATOLATO <b>GRIGIO FREDDO</b>	<b>Single Coat</b> 0,80 kg/m <sup>2</sup>	Spread application. Beat and then stroke, smoothing in a casual and light way	80 grit	<b>1st coat</b> 0,15 kg/m <sup>2</sup> <b>2nd coat</b> 0,10 kg/m <sup>2</sup>	MG.10.02 MG.10.02	American Plastic Trowel	(R532) TOP-CLEAR SATINATO



# METALLO CONTINUO - M2D



APPLICATION CYCLE  
DECORATIVE EFFECT ONLY

## 1<sup>st</sup> DAY R302 DECORO SPATOLATO (\*)

### 1<sup>st</sup> PHASE

#### APPLICATION OF DECORATIVE LAYER

Low-thickness smooth-coat application of a first layer of coloured decorative mortar in the reference colour (\* see table M2D on page 16). Always keep the trowel blade clean during application.



**BICOMPONENTE (A+B)**  
**Dilution - floor:** 5% water  
**Dilution - wall:** Up to 1% addensante  
**18 h**  
**Tool:** American steel trowel  
**Pot-life at 25°C:** 40 minutes  
**Overcoatable at 25°C:** 18 hours  
**Consumption:** 0,50 Kg/m2

## 2<sup>nd</sup> DAY R302 DECORO SPATOLATO (\*)

### 2<sup>nd</sup> PHASE

#### APPLICATION OF DECORATIVE LAYER

Low-thickness smooth-coat application of a second layer of coloured decorative mortar in the reference colour (\* see table M2D on page 16). Always keep the trowel blade clean during application.



**BICOMPONENTE (A+B)**  
**Dilution - floor:** 5% water  
**Dilution - wall:** Up to 1% addensante  
**18 h**  
**Tool:** American steel trowel  
**Pot-life at 25°C:** 40 minutes  
**Overcoatable at 25°C:** 18 hours  
**Consumption:** 0,50 Kg/m2

## 3<sup>rd</sup> DAY R425 METAL GEL (\*)

### 3<sup>rd</sup> PHASE

#### APPLICATION OF COLORED FINISH WITH SEMI-COVERING OR VEILING EFFECT

Application of finishing coat colored in the reference colour (\* see table M2D on page 16) for the creation of a covering background. Spread quickly with a trowel, adding an adequate amount to the surface, always maintain a wet edge until completely and evenly covered.



**MONOCOMPONENTE (Mono)**  
**Dilution:** Ready to use  
**Tool:** Transparent plastic trowel  
**4-6 h**  
**Pot-life at 25°C:** Non applicabile  
**Overcoatable at 25°C:** 4-6 hours  
**Consumption:** 0,10 Kg/m2

## R425 METAL GEL (\*)

### 4<sup>th</sup> PHASE

#### APPLICATION OF COLORED FINISH WITH SEMI-COVERING OR VEILING EFFECT

Smooth application of finishing/glazing colored in the reference colour (\* see M2D table on page 16) for the creation of the final effect. Spread quickly with a trowel, always adding an adequate amount to the surface



**MONOCOMPONENTE (Mono)**  
**Dilution:** Ready to use  
**Tool:** Transparent plastic trowel  
**4-6 h**  
**Pot-life at 25°C:** Non applicabile  
**Overcoatable at 25°C:** 4-6 hours  
**Consumption:** 0,10 Kg/m2

## 4<sup>th</sup> DAY R53x TOP-CLEAR (\*)

### 5<sup>th</sup> PHASE

#### APPLICATION OF TRANSPARENT PROTECTIVE FINISH

Roller application of one or two coats of transparent polyurethane water top coat in the reference version (\* see table M2D on page 16).



**BICOMPONENTE (A+B)**  
**Dilution:** 10% water  
**Tool:** Microfibre roller (10mm)  
**24 h**  
**Pot-life at 25°C:** 90 minutes  
**Walkability a 25°C:** 24 hours  
**Consumption:** 0,10 Kg/m2



## METALLO CONTINUO - M2D

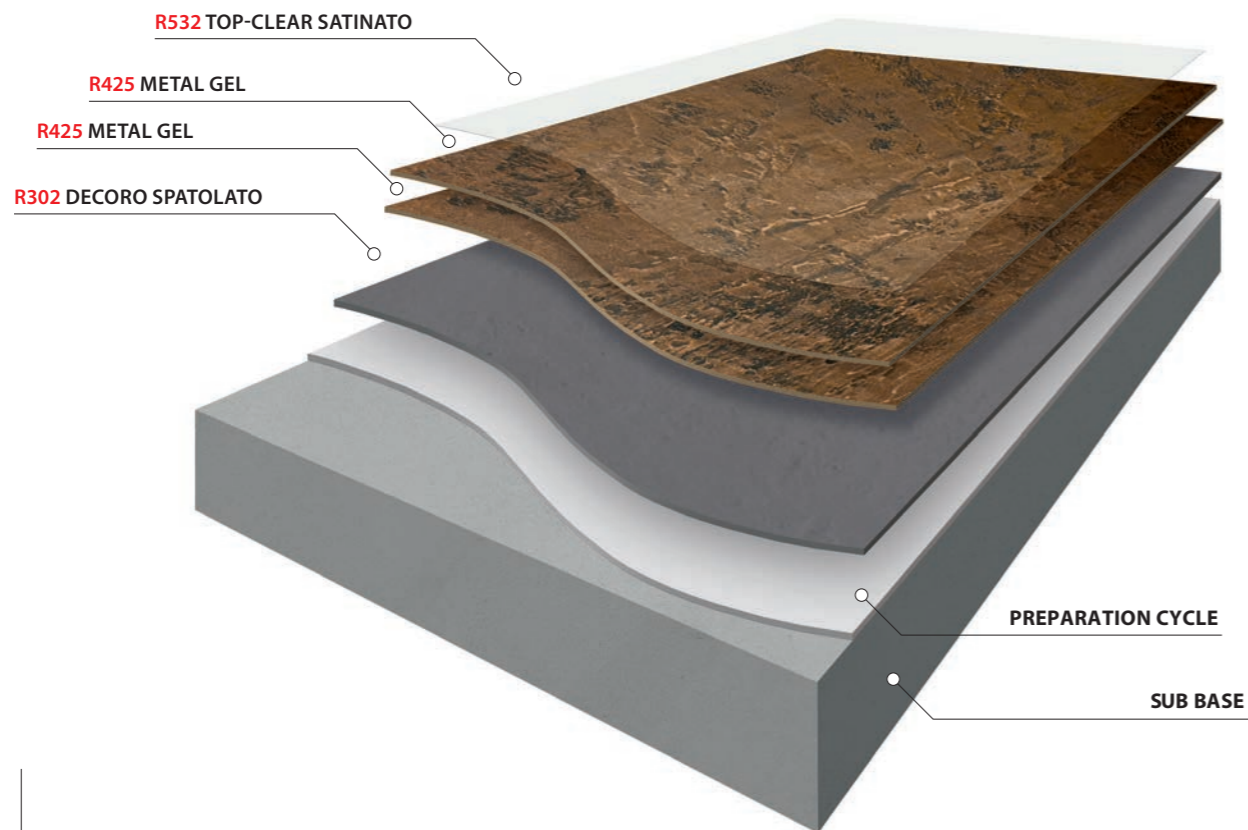
The Metallo Continuo M2D, with its “smooth” applications, provides sleek and 2D surfaces that emphasize the elegance of minimal design. The M2D collection, oriented towards a flatter aesthetic, focuses on the strength and durability of metal, while offering a range of colors and finishes that perfectly fit any design context. Cutting-edge technologies ensure that each surface not only meets visual expectations but also offers superior technical performance.



METALLO CONTINUO 2D	Cycle Days	Floor & Wall	R302 DECORO SPATOLATO				R425 METAL GEL			Finishing Coat
			Base Product Colour (*)	Coats & Consumption	Application	Sand	Coats & Consumption	Colour	Tool	
<b>STEEL</b>	4	✓	(R302) DECORO SPATOLATO <b>ARDESIA</b>	1 <sup>st</sup> coat 0,50 kg/m <sup>2</sup> 2 <sup>nd</sup> coat 0,50 kg/m <sup>2</sup>	Smooth application in 2 coats	from 80 to 120 grit	1 <sup>st</sup> coat 0,10 kg/m <sup>2</sup> 2 <sup>nd</sup> coat 0,10 kg/m <sup>2</sup>	MG.05.00 MG.10.03	American Plastic Trowel	(R532) TOP-CLEAR SATINATO
<b>COPPER GREEN</b>	4	✓	(R302) DECORO SPATOLATO <b>VERDE RAME</b>	1 <sup>st</sup> coat 0,50 kg/m <sup>2</sup> 2 <sup>nd</sup> coat 0,50 kg/m <sup>2</sup>	Smooth application in 2 coats	from 80 to 120 grit	1 <sup>st</sup> coat 0,10 kg/m <sup>2</sup> 2 <sup>nd</sup> coat 0,10 kg/m <sup>2</sup>	MG.07.01 MG.08.01	American Plastic Trowel	(R532) TOP-CLEAR SATINATO
<b>CORTEN</b>	4	✓	(R302) DECORO SPATOLATO <b>ARDESIA</b>	1 <sup>st</sup> coat 0,50 kg/m <sup>2</sup> 2 <sup>nd</sup> coat 0,50 kg/m <sup>2</sup>	Smooth application in 2 coats	from 80 to 120 grit	1 <sup>st</sup> coat 0,10 kg/m <sup>2</sup> 2 <sup>nd</sup> coat 0,10 kg/m <sup>2</sup>	MG.05.00 MG.09.01	American Plastic Trowel	(R532) TOP-CLEAR OPACO
<b>RUST</b>	4	✓	(R302) DECORO SPATOLATO <b>BRONZO</b>	1 <sup>st</sup> coat 0,50 kg/m <sup>2</sup> 2 <sup>nd</sup> coat 0,50 kg/m <sup>2</sup>	Smooth application in 2 coats	from 80 to 120 grit	1 <sup>st</sup> coat 0,10 kg/m <sup>2</sup> 2 <sup>nd</sup> coat 0,10 kg/m <sup>2</sup>	MG.06.00 MG.09.00	American Plastic Trowel	(R532) TOP-CLEAR OPACO
<b>GOLD</b>	4	✓	(R302) DECORO SPATOLATO <b>ORO</b>	1 <sup>st</sup> coat 0,50 kg/m <sup>2</sup> 2 <sup>nd</sup> coat 0,50 kg/m <sup>2</sup>	Smooth application in 2 coats	from 80 to 120 grit	1 <sup>st</sup> coat 0,10 kg/m <sup>2</sup> 2 <sup>nd</sup> coat 0,10 kg/m <sup>2</sup>	MG.01.00 MG.02.00	American Plastic Trowel	(R532) TOP-CLEAR SATINATO
<b>WHITE GOLD</b>	4	✓	(R302) DECORO SPATOLATO <b>GRIGIO FREDDO</b>	1 <sup>st</sup> coat 0,50 kg/m <sup>2</sup> 2 <sup>nd</sup> coat 0,50 kg/m <sup>2</sup>	Smooth application in 2 coats	from 80 to 120 grit	1 <sup>st</sup> coat 0,10 kg/m <sup>2</sup> 2 <sup>nd</sup> coat 0,10 kg/m <sup>2</sup>	MG.04.02 MG.04.00	American Plastic Trowel	(R532) TOP-CLEAR SATINATO



# METALLO CONTINUO - M3D



APPLICATION CYCLE  
DECORATIVE EFFECT ONLY

## 1<sup>st</sup> DAY R302 DECORO SPATOLATO ( \* )

### 1<sup>st</sup> PHASE

#### APPLICATION OF DECORATIVE LAYER

A single coat application of product colored in the reference shade (\* see M3D table on page 20). without scraping the base layer. Then it is necessary to "pat" the surface of the area just worked with the trowel plate, avoiding tilting the blade, randomly and without a particular design. Create obvious irregularities and ripples that will be immediately smoothed by lightly stroking the trowel across the surface.



**BICOMPONENTE (A+B)**  
**Dilution - floor:** Ready to use  
**Dilution - wall:** Up to 1% addensante  
**Tool:** American steel trowel  
**Pot-life at 25°C:** 40 minutes  
**Overcoatable at 25°C:** 18 hours  
**Consumption:** 0,80 Kg/m2

18 h

## 2<sup>nd</sup> DAY R425 METAL GEL ( \* )

### 2<sup>nd</sup> PHASE

#### APPLICATION OF COLORED FINISH WITH SEMI-COVERING OR VEILING EFFECT

Application of finishing coat colored in the reference colour (\* see M3D table on page 20) for the creation of a covering background. Spread quickly with a trowel, adding an adequate amount to the surface, always maintain a wet edge until completely and evenly covered.



**MONOCOMPONENTE (Mono)**  
**Dilution:** Ready to use  
**Tool:** Transparent plastic trowel  
**Pot-life at 25°C:** Non applicabile  
**Overcoatable at 25°C:** 4-6 hours  
**Consumption:** 0,15 Kg/m2

4-6 h

## R425 METAL GEL ( \* )

### 3<sup>rd</sup> PHASE

#### APPLICATION OF COLORED FINISH WITH SEMI-COVERING OR VEILING EFFECT

Smooth application of finishing/glazing colored in the reference colour (\* see M3D table on page 20) for the creation of the final effect. Spread quickly with a trowel, always adding an adequate amount to the surface



**MONOCOMPONENTE (Mono)**  
**Dilution:** Ready to use  
**Tool:** Transparent plastic trowel  
**Pot-life at 25°C:** Non applicabile  
**Overcoatable at 25°C:** 4-6 hours  
**Consumption:** 0,10 Kg/m2

4-6 h

## 3<sup>rd</sup> DAY R532 TOP-CLEAR ( \* )

### 4<sup>th</sup> PHASE

#### APPLICATION OF TRANSPARENT PROTECTIVE FINISH

Roller application of one or two coats of transparent polyurethane water top coat in the reference version (\* see M3D table on page 20).



**BICOMPONENTE (A+B)**  
**Dilution:** 10% water  
**Tool:** Microfibre roller (10mm)  
**Pot-life at 25°C:** 90 minutes  
**Walkability at 25°C:** 24 hours  
**Consumption:** 0,10 Kg/m2

24 h



## METALLO CONTINUO - M3D

The Metallo Continuo M3D explore three-dimensional solutions, where the material dimension of surfaces introduces a new visual depth. The M3D finishes, characterized by a richness of textures and effects, move beyond traditional flatness, immersing observers in a unique sensory experience. Unmatched resistance blends with advanced aesthetics, offering unprecedented versatility for innovative projects that require strong visual and functional impact.



METALLO CONTINUO 3D	Cycle Days	Floor & Wall	R302 DECORO SPATOLATO				R425 METAL GEL			Finishing Coat
			Base Product Colour (*)	Coats & Consumption	Application	Sand	Coats & Consumption	Colour	Tool	
<b>RUST</b>	3	✓	(R302) DECORO SPATOLATO <b>BRONZO</b>	<b>Single Coat</b> 0,80 kg/m <sup>2</sup>	Coated application. Pat and then stroke by smoothing randomly and lightly	80 grit	<b>1st coat</b> 0,15 kg/m <sup>2</sup> <b>2nd coat</b> 0,10 kg/m <sup>2</sup>	MG.06.00 MG.09.00	American Plastic Trowel	(R533) TOP-CLEAR OPACO
<b>GOLD</b>	3	✓	(R302) DECORO SPATOLATO <b>ORO</b>	<b>Single Coat</b> 0,80 kg/m <sup>2</sup>	Coated application. Pat and then stroke by smoothing randomly and lightly	80 grit	<b>1st coat</b> 0,15 kg/m <sup>2</sup> <b>2nd coat</b> 0,10 kg/m <sup>2</sup>	MG.01.00 MG.02.00	American Plastic Trowel	(R532) TOP-CLEAR SATINATO
<b>CORTEN</b>	3	✓	(R302) DECORO SPATOLATO <b>ARDESIA</b>	<b>Single Coat</b> 0,80 kg/m <sup>2</sup>	Coated application. Pat and then stroke by smoothing randomly and lightly	80 grit	<b>1st coat</b> 0,15 kg/m <sup>2</sup> <b>2nd coat</b> 0,10 kg/m <sup>2</sup>	MG.05.00 MG.09.01	American Plastic Trowel	(R533) TOP-CLEAR OPACO
<b>COPPER GREEN</b>	3	✓	(R302) DECORO SPATOLATO <b>VERDE RAME</b>	<b>Single Coat</b> 0,80 kg/m <sup>2</sup>	Coated application. Pat and then stroke by smoothing randomly and lightly	80 grit	<b>1st coat</b> 0,15 kg/m <sup>2</sup> <b>2nd coat</b> 0,10 kg/m <sup>2</sup>	MG.07.01 MG.08.01	American Plastic Trowel	(R532) TOP-CLEAR SATINATO
<b>STEEL</b>	3	✓	(R302) DECORO SPATOLATO <b>ARDESIA</b>	<b>Single Coat</b> 0,80 kg/m <sup>2</sup>	Coated application. Pat and then stroke by smoothing randomly and lightly	80 grit	<b>1st coat</b> 0,15 kg/m <sup>2</sup> <b>2nd coat</b> 0,10 kg/m <sup>2</sup>	MG.05.00 MG.10.03	American Plastic Trowel	(R532) TOP-CLEAR SATINATO
<b>WHITE GOLD</b>	3	✓	(R302) DECORO SPATOLATO <b>GRIGIO FREDDO</b>	<b>Single Coat</b> 0,80 kg/m <sup>2</sup>	Coated application. Pat and then stroke by smoothing randomly and lightly	80 grit	<b>1st coat</b> 0,15 kg/m <sup>2</sup> <b>2nd coat</b> 0,10 kg/m <sup>2</sup>	MG.04.02 MG.04.00	American Plastic Trowel	(R532) TOP-CLEAR SATINATO



## R302 DECORO SPATOLATO (A+B)

Two-component mortar formulated with water-based epoxy resins filled with fine-grained aggregates. Product to be used to obtain the **SPATOLATO** effect and as a base for **METALLO CONTINUO** effects.

It has excellent adhesion on resin base coatings, excellent mechanical resistance and good abrasion resistance, characteristics that make it ideal for all interior applications.

Supplied with a neutral base, it must be pigmented with ColorLAB pastes, to obtain colors as per the chart and as per ( \* ) **METALLO CONTINUO** Tables. Can be applied in at least 2 coats (as a basis for 2D Effect) or applied in a single coat (as a basis for 3D effect): on horizontal surfaces diluted with water at 5% (2D) or ready to use (3D), on vertical surfaces with the addition of up to 1% by weight of **R844 ADDENSANTE LIQUIDO**, eliminating the water dilution.

### BICOMPONENTE (A+B)

**Dilution - floor:** 5% water (2D) - ready to use (3D)

**Dilution - wall:** Up to 1% Addensante liquido

**Tool:** American steel trowel

**Pot-life at 25°C:** 40 min

**Over-application at 25°C:** 18 h

**Approximate consumption:** 0.50 kg/m<sup>2</sup> (2D) - 0.80 kg/m<sup>2</sup> (3D)

**Mixture to weight ratio:** A=850 - B=100 - PIGMENT=50

**Packaging:** (A+B+PIGMENT) 5 kg / 10 kg / 20 kg

### ATTENTION

For the protection of interior of surfaces that involve contact with water, (shower, washbasin area, counter top etc.), even if only occasionally, the final application of a solvent-based protective finish is recommended R55x TOP-CLEAR SOL in the desired version.

Always consult ErreLAB Technical Assistance in advance for further information.

## R425 METAL GEL (Mono)

One-component water-based polyurethane finish, with special pearlescent and micaceous pigments, with a full covering, semi-covering or thin glaze effect depending on the application. Product to be used to obtain **METALLO CONTINUO** Effects. Supplied ready to use already pigmented as per the proposed colors of the ( \* ) **METALLO CONTINUO** Tables. Spread with a transparent plastic trowel, taking care to follow the design made during the installation of **R302 DECORO SPATOLATO**. Create a homogeneous decorative layer on the application area, until a harmoniously pleasing effect is achieved. The colour and the final aesthetic result depend a lot on the hand of the installer during the application of the product.

### MONOCOMPONENTE (Mono)

**Dilution:** Ready to use

**Tool:** American trowel transparent plastic

**Pot-life at 25°C:** non applicable

**Overcoatable at 25°C:** 4-6 h

**Indicative consumption:** 0,10 kg / m<sup>2</sup>

**Mixture to weight ratio:** -

**Packaging:** (Mono) 1 kg

## R53x TOP-CLEAR (A+B)

Two-component clear coat formulated with water-based polyurethane resins. In SATIN version (Gloss 60° = 25-35). The value varies depending on the roughness of the surface on the which is applied or OPAQUE (Gloss 60° = 5-10). The value varies depending on the roughness of the surface on the which is applied. Product to be applied with a roller as a Top coating in 1 or 2 coats. During application product should be rolled and re rolled at 90 degrees ensuring roller overlap.

In this case, always dilute 10% by weight with water on all decorative cycles (In some cases, the final application may include instead the use of American plastic trowel transparent without dilution). UV, Chemical, abrasion and scratch resistant.

### BICOMPONENTE (A+B)

**Dilution:** 10% Water

**Tool:** Microfiber Roller (10 mm)

**Pot-life at 25°C:** 90 min

**Overcoatable at 25°C:** 4 h

**Indicative consumption:** 0,10 kg / m<sup>2</sup>

**Mixture to weight ratio:** A=833 - B=167

**Packaging:** (A+B) 1 kg / 5 kg / 10 kg

### NOTE

Although the utmost care has been taken in compiling the technical information on the products, all suggestions or recommendations regarding use are made without guarantee as the conditions of use are beyond the manufacturer's control. It is necessary for applicators to verify the suitability of the products for the specific case, the application conditions and the performance required of the surfaces to be treated. Furthermore, before installing our products, it is a good idea for the applicators to have followed the ErreLAB application courses or consulted the Technical Assistance Service. The color and final aesthetic result of the decorative effect however depend on the manual skill and care of the applicator in applying the products. However, for each product it is recommended to carefully read the relevant Technical Data Sheet available on our website ([www.errelab.com](http://www.errelab.com)). All the products indicated in this document require, for use and storage, an approximate ambient temperature between 15°C and 30°C. Do not leave packages in the cold or in direct sunlight. The deep drying of the indicated work cycles takes place after approximately 7 days. The colors of the METALLO CONTINUO folders in this catalog have been typographically created in four colors and are therefore to be considered purely indicative.



Cod. Prod. 9R981-3090-002



8 051418 002584



**ERRELAB**  
crea in resina

**ERRELAB S.r.l.**

Via Volta, 45 • 10040 • Druento • TO

Tel. +39 011.9941831 • Fax 011.9841621

[errelab.com](http://errelab.com)



project design: [furiolaruta.it](http://furiolaruta.it)