

Spatolato Outdoor

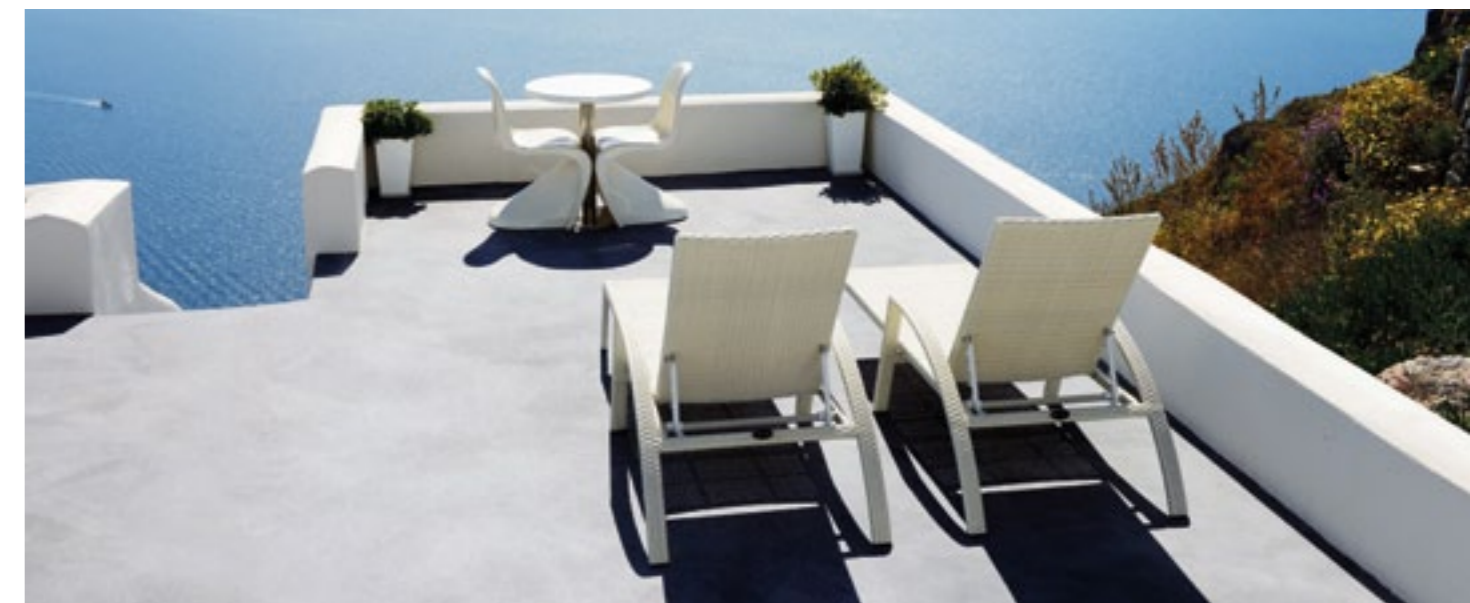


Resin coating for outdoor use



Broaden your horizons.

Spatolato Outdoor, the ErreLAB system that conquers new areas to be dedicated to resin surfaces





More Space

A system designed to enrich outdoor areas
of the houses such as patios, balconies, terraces,
walkways, sidewalks and pool contours.

A discreet decor that does not go unnoticed,
in an essential, well-calibrated color selection,
which can continue the processing in the exteriors
and the color made inside.

To make the most of every outdoor space





More comfort

With delicate flows of material, in its aesthetic rigor,

Spatolato Outdoor dresses and colors outdoor areas

with great charm and cleanliness.

Continuous, slightly textured surfaces,

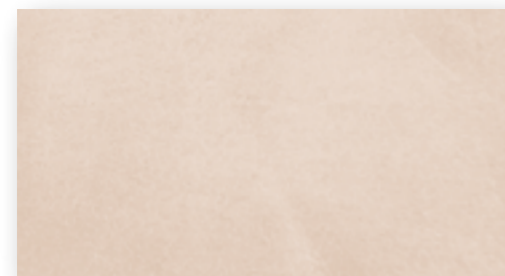
Joint-free, easy to clean and maintain



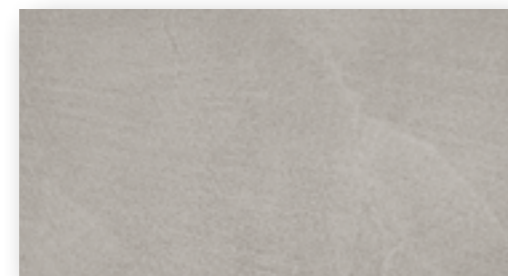


Color Selection

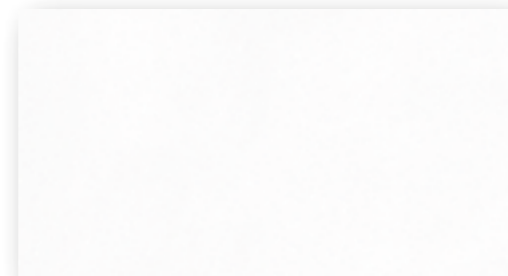
The colours available for the Spatolato Outdoor system are as follows.



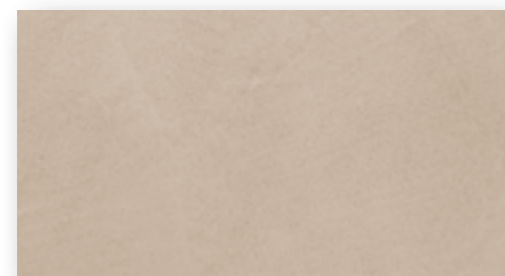
133.02



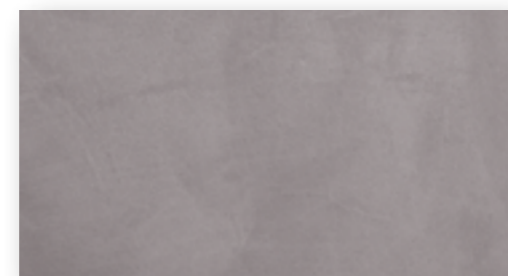
590.05



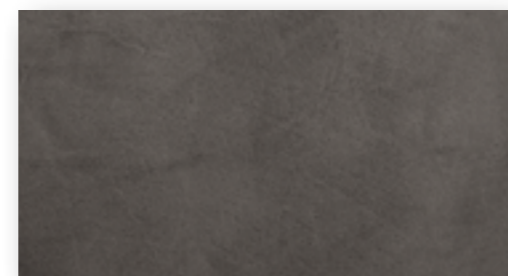
593.01



137.02



591.03



592.05

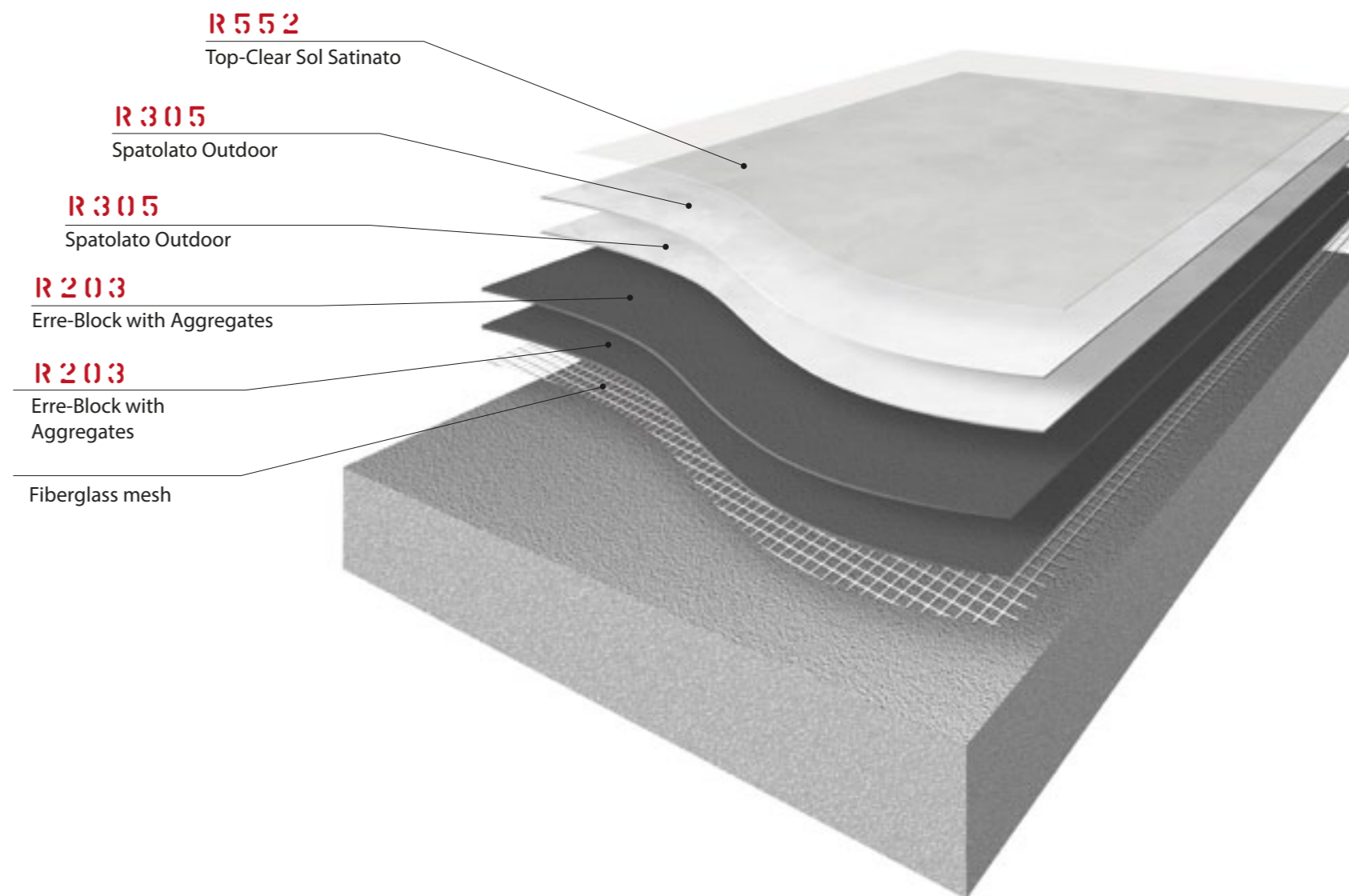
ATTENTION

The colors presented above have a high durability outdoors.

In the case of customized colors, it is necessary to use only pastes with pigments resistant to outdoor use.

Spatolato Outdoor System

stratigraphy application cycle



Application cycle

Pre-checks • Phase 1

Carry out accurate surface checks. Proceed with a thorough chemical washing and adequate mechanical preparation with Diamond blade of tile floors. Any active cracks must be widened, then filled with SIGILLANTE POLIURETANICO **R811**, applying a 75 g/m² fiberglass mesh reinforcement to the surface. Volume shortages must be repaired with BLINDO.

1° Day • Phase 2

R 2 0 3 ERRE-BLOCK + AGGREGATES

SUBSTRATE PREPARATION

Place 75 g/m² glass mesh and drown it by applying an American trowel Erre-Block loaded with 10% Quartz B1 **R825**. Before proceeding to the next step, always check the humidity level.



TRICOMPONENTE (A+B+C)

Dilution: Ready to use

Tool: Steel Trowel

Pot-Life at 25°C: 90 min

Overapplication at 25°C: 24 h

Consumption 1st coat: 1,20 kg/m²

2° Day • Phase 3

R 2 0 3 ERRE-BLOCK + AGGREGATES

SUBSTRATE PREPARATION

Apply a layer of Erre-Block loaded with 10% Quartz B1 **R825** with a trowel in adequate quantities. Before proceeding to the next step, always check the humidity level.



TRICOMPONENTE (A+B+C)

Dilution: Ready to use

Tool: Steel Trowel

Pot-Life at 25°C: 90 min

Overapplication at 25°C: 24 h

Consumption 2nd coat: 1,20 kg/m²

3° Day • Phase 4 - 5

R 3 0 5 SPATOLATO OUTDOOR

DECORATIVE MORTAR APPLICATION

Apply and skim off, with an American steel trowel, a first coat of Spatolato Outdoor in the desired color.



BICOMPONENTE (A+B)

Dilution: Ready to use

Tool: Steel Trowel

Pot-Life at 25°C: 50 min

Overcoatable at 25°C: 6 h

Consumption 1st coat: 0,40 kg/m²

Consumption 2nd coat: 0,40 kg/m²

R 3 0 5 SPATOLATO OUTDOOR

DECORATIVE MORTAR APPLICATION

Apply the second coat with a steel trowel of Spatolato Outdoor in the desired color.

4° Day • Phase 6

R 5 5 2 TOP-CLEAR SOL SATINATO

TRANSPARENT PROTECTIVE FINISH

Final roller application of transparent solvent-based satin polyurethane finish.



BICOMPONENTE (A+B)

Dilution: Ready to use

Tool: Steel Trowel

Pot-Life at 25°C: 40 min

Walkability at 25°C: 24 h

Consumption: 0,12 kg/m²

ATTENTION

The SPATOLATO OUTDOOR system does not have waterproofing or elastomeric characteristics and therefore requires correctly waterproofed and structurally stable substrates. Outdoor interventions require some special attention: the management of slopes and related water drains, the management of drips on the underlying surfaces, the creation of plinths and shells, the cutting of expansion joints on large surfaces, the correct protection from bad weather and humidity during work. For more information, view the errelab.com/outdoor page, contact ErreLAB technical assistance.

R 2 0 3 ERRE-BLOCK (A+B+C)

Three-component primer formulated with epoxy resins in aqueous emulsion and inorganic binders, to be used on particularly damp substrates and with rising humidity.

It has the function of a "vapor barrier" resistant to humidity levels very high even in counterthrust.

| | |
|------------------------|----------------------------|
| Unit Sizes | 10 kg, 20 kg |
| Weight ratio | A=300, B=200, C=500 |
| Dilution | Ready to use |
| Tool | Steel trowel |
| Pot-life 25°C | 90 minutes |
| Overapplication at 25° | 24 hours |
| Consumption | 0.80 - 1.20 kg/m2 |

R 3 0 5 SPATOLATO OUTDOOR (A+B)

Two-component, non-yellowing, fine-grained, resin-based mortar polyurethane in water dispersion. Has excellent adhesion on coatings resinous, excellent mechanical strength, good abrasion resistance and excellent resistance to light and atmospheric agents that make it ideal for outdoor application (only in recommended colors) and indoors in the areas most exposed to direct light (shop windows, French windows, etc.).

| | |
|------------------------|--------------------------------|
| Unit Sizes | 5 kg, 10 kg |
| Weight ratio | A=900, B=50, Pigment=50 |
| Dilution | Ready to use |
| Tool | Steel trowel |
| Pot-life 25°C | 50 minutes |
| Overapplication at 25° | 6 hours |
| Consumption | 0.40 kg/m2 |

R 5 5 2 TOP-CLEAR SOL SATINATO (A+B)

Two-component polyurethane (A+B) resin-based transparent satin enamel Aliphatic polyurethanes, conveyed in solvent, with silica and opaque waxes added.

Resistant to ultraviolet rays, acid rain chemical attack and the action of different acids.

R552 TOP-CLEAR SOL SATIN forms a film with good strength abrasion and scratching.

| | |
|---------------------|---------------------------------|
| Packaging (A+B) | 1 kg, 4 kg, 10 kg |
| Weight ratio | A=750, B=250 |
| Dilution | Ready to use |
| Tool | Microfiber roller (6 mm) |
| Pot-life at 25°C | 40 minutes |
| Walkability at 25°C | 24 hours |
| Consumption | 0.12 kg/m2 |

ATTENTION:

On floors exposed to the elements and subject to wetness, apply a second Modified Top-Clear Sol finishing shot by adding 10% by weight of inert Non-slip: Quartz B1 or B2.

The Outdoor system at a glance • Floor / Terrace

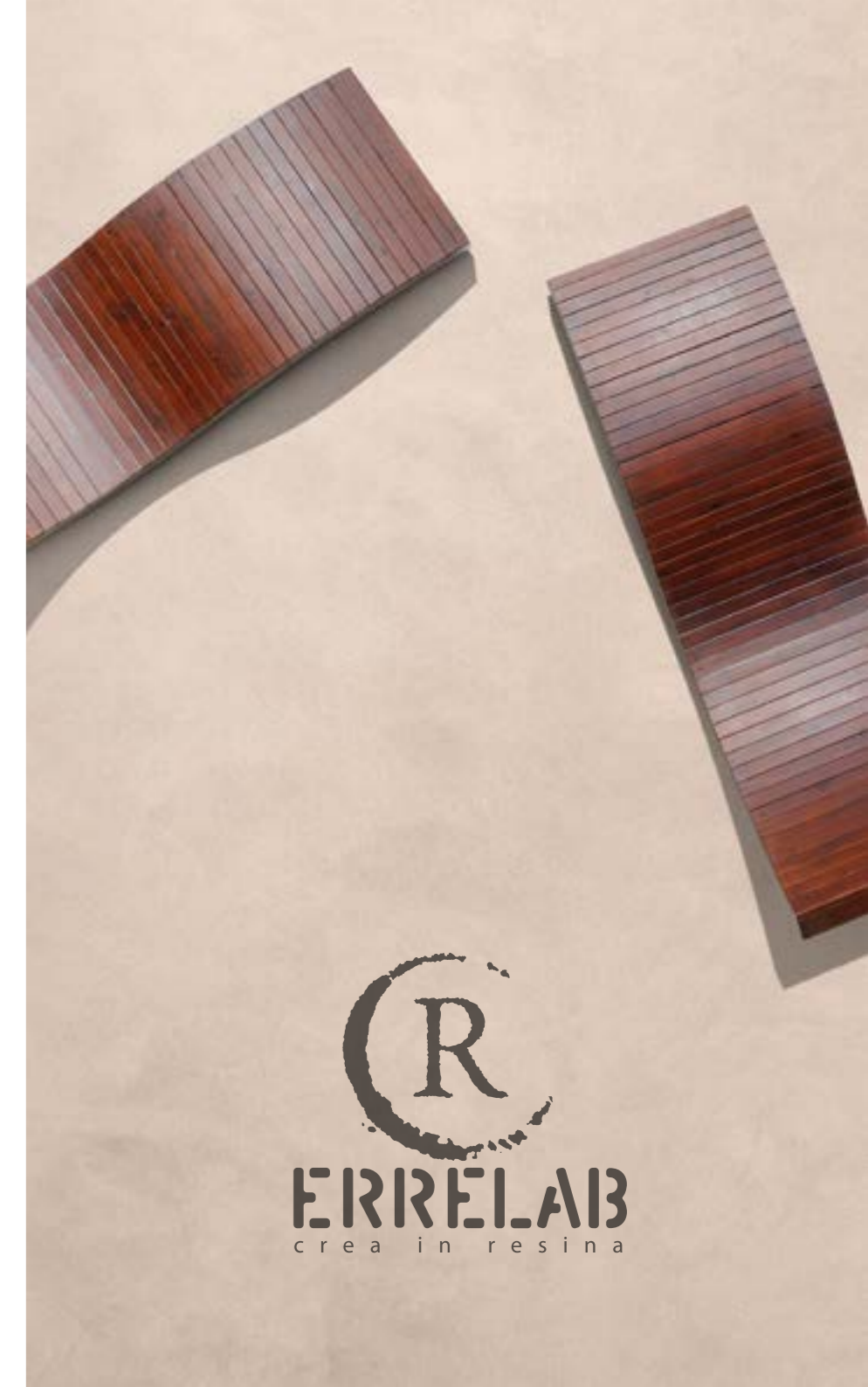
| DAY | PHASE | PROCESS OR PRODUCT | CODE | APPLICATION | CONSUMPTION Kg/m ² |
|-----|-------|---|------|-------------|-------------------------------|
| | 1 | Humidity verification and mechanical preparation by sanding | | | |
| 1° | 2 | Erre-Block + 10% Quarzo B1 + Fiberglass Mesh | R203 | | 1,20 |
| 2° | 3 | Erre-Block + 10% Quarzo B1 | R203 | | 0,80 |
| 3° | 4 | Spatolato Outdoor (*) | R305 | | 0,40 |
| | 5 | Spatolato Outdoor (*) | R305 | | 0,40 |
| 4° | 6 | Top-Clear Sol Satinato | R552 | | 0,10 |

ATTENTION: Consumption indicated may vary depending on the conditions of the support.

Note

Although the utmost care has been taken in compiling the technical information on the products, it is necessary for the applicators to verify the suitability of the products for the specific case, the application conditions and the performance required for the surfaces to be treated. It is good that the applicators, before laying our products, have followed our application courses or have confronted our Technical Assistance Service. The color and the final aesthetic result of the decorative effect depend on the manual skill of the applicator in applying the products. All products mentioned in this document require an approximate ambient temperature between 15°C and 30°C for use and storage. Do not leave the packages in direct sunlight. The depth drying of the indicated work cycles takes place after about 7 days.

The colours in this folder have been typographically made in four-colour process and are therefore to be considered purely indicative.





ERRELAB S.r.l.

Via Volta, 45 • 10040 - Druento • TO • Tel. +39 011.9941831 • Fax 011.9841621 • www.errelab.com